

**EASY AND FAST  
MOBILE APPLICATION GENERATOR**



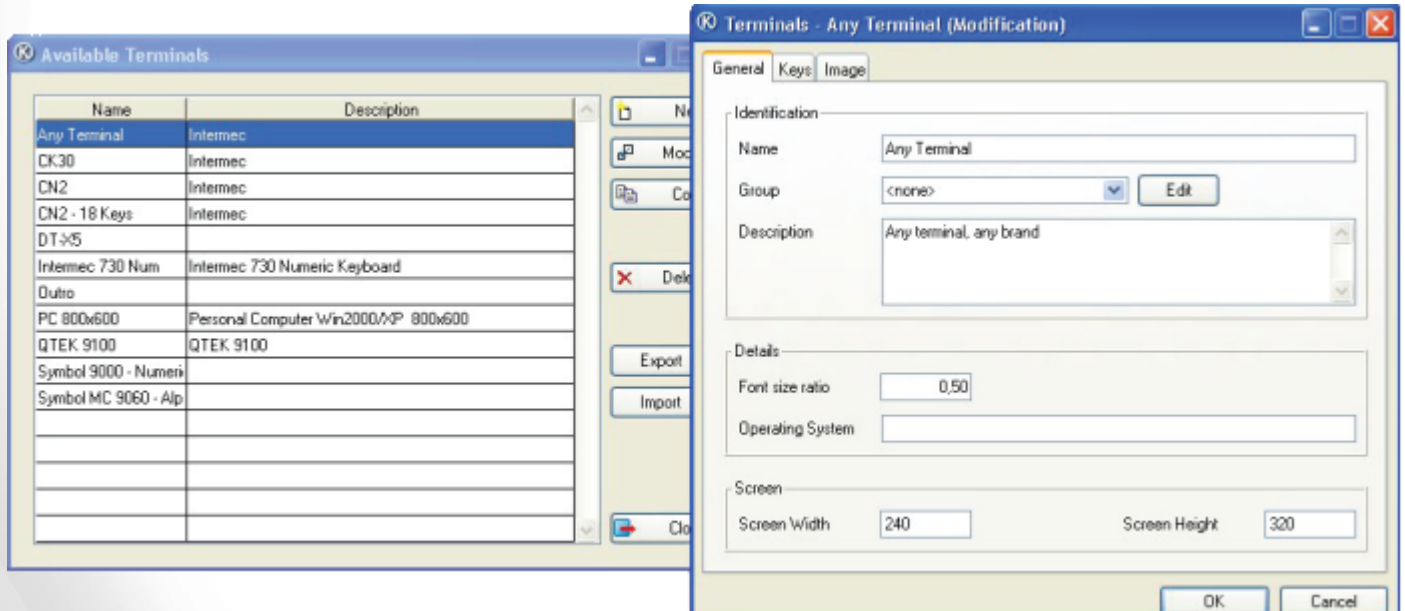
**Kalipso KEYS application**  
English Manual

## Kalipso KEYS application

To add a terminal keyboard configuration in the Kalipso Studio, you can use a small application present in the Kalipso client folder.

In the Kalipso STUDIO, Menu Tools > Terminals.

To add a new terminal to your list, you can either start from an existing terminal configuration, copy it and save with current configuration and terminal name, or create a new one from scratch.



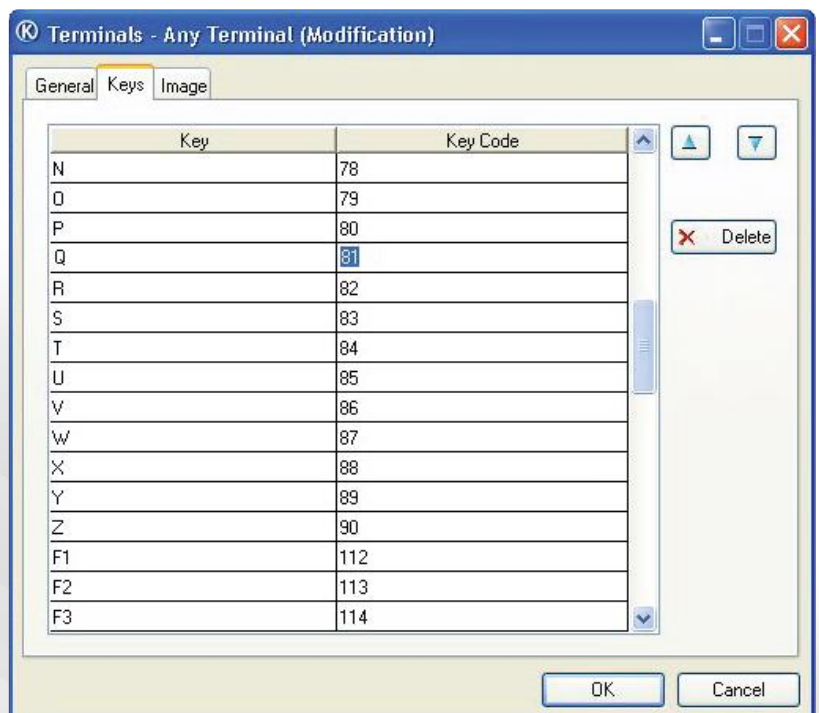
Please connect your terminal to the PC by ActiveSync.

In the corresponding operative system folder (ex. PPC2003\*), found in the Kalipso client folder in the CD, you will find the file "Keys.exe".

Copy this file to your terminal and run the file.

This executable gives you the keyboard mapping between the terminal keys and the Kalipso key code. Just press the keyboard keys in the terminal and the software will give you the corresponding key code to use in your Kalipso created applications.

\*For Windows Mobile 5, Windows Mobile 6 and Pocket PC2003, please use the installation files in the Install\_PPC2003 folder. For Windows CE use Install\_ArmV4 folder. All other folders are product specific.



**Note:** This application is only to assist you in gathering the key mapping you need. An updated version is to be released.